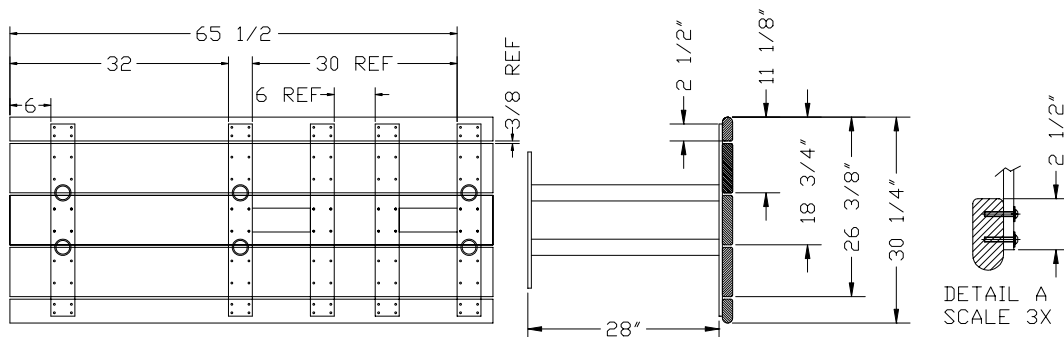


ASSEMBLY INSTRUCTIONS: ADA ACCESSIBLE 6 FOOT TABLE 500401

1. Unpack and lay out pieces to assemble. Verify that the parts, quantity, and dimensions match those on the enclosed bill of material.
2. Begin by placing two bull nose boards down on the ground or work area with curved side facing away from each other. Place the three rectangular boards between the two bull nose boards. Begin with one bull nose board and use other boards as working shims.
3. Place one weldment with single plate having 20 drilled holes down against the boards and locate plate with legs at a distance of 6 inches from plate side edge to end of bull nose and at a distance of 2 1/2 inches from plate end edge to flat side of bull nose. Use a hand square to line up plate on the bull nose surface. See diagram 1 also detail A.
4. Drill 5/32 diameter pilot hole (four places) into the board and install four 1/4 x 1 1/2 screws into the board on each plate. (use end 4 holes in metal plates of weldment as a drill guide)
5. Place the second weldment with double plates having 20 drilled holes each down against the board and locate plate with legs at a distance of 32 inches from plate side edge to same end of bull nose used in step 3 and at a distance of 2 1/2 inches from plate end edge to flat side of bull nose. Use a hand square to line up plate on the bull nose surface. See diagram 1 also detail A.
6. Drill 5/32 diameter pilot hole (four places) into the board and install four 1/4 x 1 1/2 screws into the board on each plate. (use end 4 holes in metal plate of weldment as a drill guide)
7. Place the third weldment with double plates having 20 drilled holes each down against the board and locate at a distance of 65 1/2 inches from plate side edge to same end of bull nose used in step 3 and at a distance of 2 1/2 inches from plate end edge to flat side of bull nose. Use a hand square to line up plate on the bull nose surface. See diagram 1 also detail A.
8. Drill 5/32 diameter pilot hole (four places) into the board and install four 1/4 x 1 1/2 screws into the board. (use end 4 holes in metal plate of weldment as a drill guide)
9. Locate one rectangular board at a distance of 7 3/4 inches from plate side edge to end of board and at a distance of 11 1/8 inches from extreme curved side of secured bull nose at both ends of rectangular board. (Ref. 3/8 inch gap between sides of boards at each end.) See diagram 1.
10. Drill 5/32 diameter pilot hole (twenty four places) into the board and install twenty four 1/4 x 1 1/2 screws into the board. (use second line of 4 holes in metal plate of weldments as a drill guide)
11. Locate second rectangular board at a distance of 7 3/4 inches from plate side edge to end of board and at a distance of 18 3/4 inches from extreme curved side of secured bull nose at both ends of rectangular board. (Ref. 3/8 inch gap between sides of rectangular boards at each end.) Diag. 1.
12. Drill 5/32 diameter pilot hole (twenty four places) into the board and install twenty four 1/4 x 1 1/2 screws into the board. (use third line of 4 holes in metal plate of weldment as a drill guide)
13. Locate third rectangular board at a distance of 7 3/4 inches from plate side edge to end of board and at a distance of 26 3/8 inches from extreme curved side of secured bull nose at both ends of rectangular board. (Ref. 3/8 inch gap between sides of rectangular boards at each end.) Diag. 1.

DIAGRAM 1: PARK AVENUE 6 FOOT ADA TABLE 500401



14. Drill 5/32 diameter pilot hole (twenty four places) into the board and install twenty four 1/4 x 1 1/2 screws into the board. (use fourth line of 4 holes in metal plate of weldment as a drill guide)
15. Locate last bull nose board at a distance of 7 3/4 inches from plate side edge to end of board and at a distance of 30 1/4 inches from extreme curved sides of both bull nose boards. (Ref. 3/8 inch gap between sides of boards at each end) See diagram 1.

16. Drill 5/32 diameter pilot hole (twenty four places) into the board and install twenty four ¼ x 1/2 screws into the board. (use fourth line of 4 holes in metal plate of weldment as a drill guide)
17. Check square ness of table before tightening screws.
18. Set the table upright and attach one end casting (100032) to the end of the table. Diagram 2
19. Make certain the board ends fit easily into the receiving areas of the casting and the spacer lugs are between each board. Press the casting firmly up against the board ends until the casting is fully seated. Diagram 2
20. Drill 5/32 diameter pilot hole (eight places) into the board ends and install eight ¼ x 1 1/2 screws through casting into the board ends to secure end casting to the table. (use the holes in metal casting as a drill guide) Diagram 2
21. Repeat steps 16 and 17 for the other end of table.

DIAGRAM 2: END CASTING ATTACHMENT, PARK AVENUE 6 FOOT ADA TABLE 500401

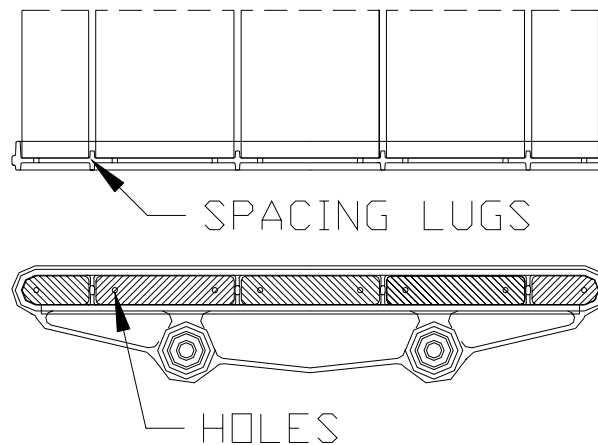
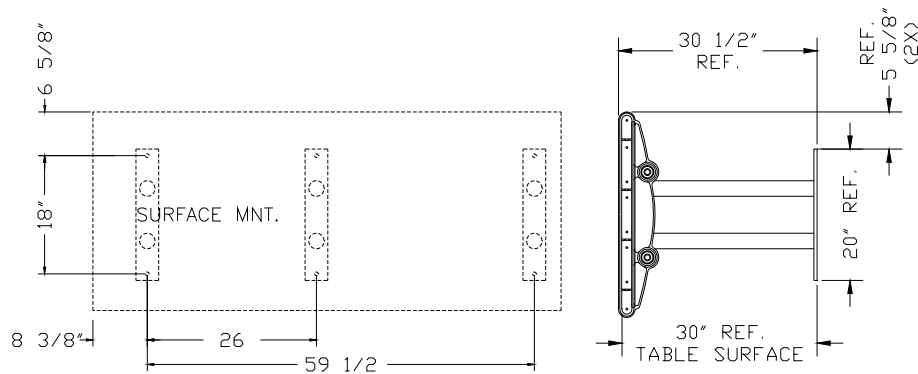


DIAGRAM 3: MOUNTING LAYOUT FOR PARK AVENUE 6 FOOT TABLE 500401

Surface mount table with 1/2 inch diameter anchors onto concrete surface at dimensions shown.
 Perimeter dimensions of table and hole locations of six concrete anchors.



MOUNTING INSTRUCTIONS: PARK AVENUE TABLES WITH SEATS (ALL UNITS)

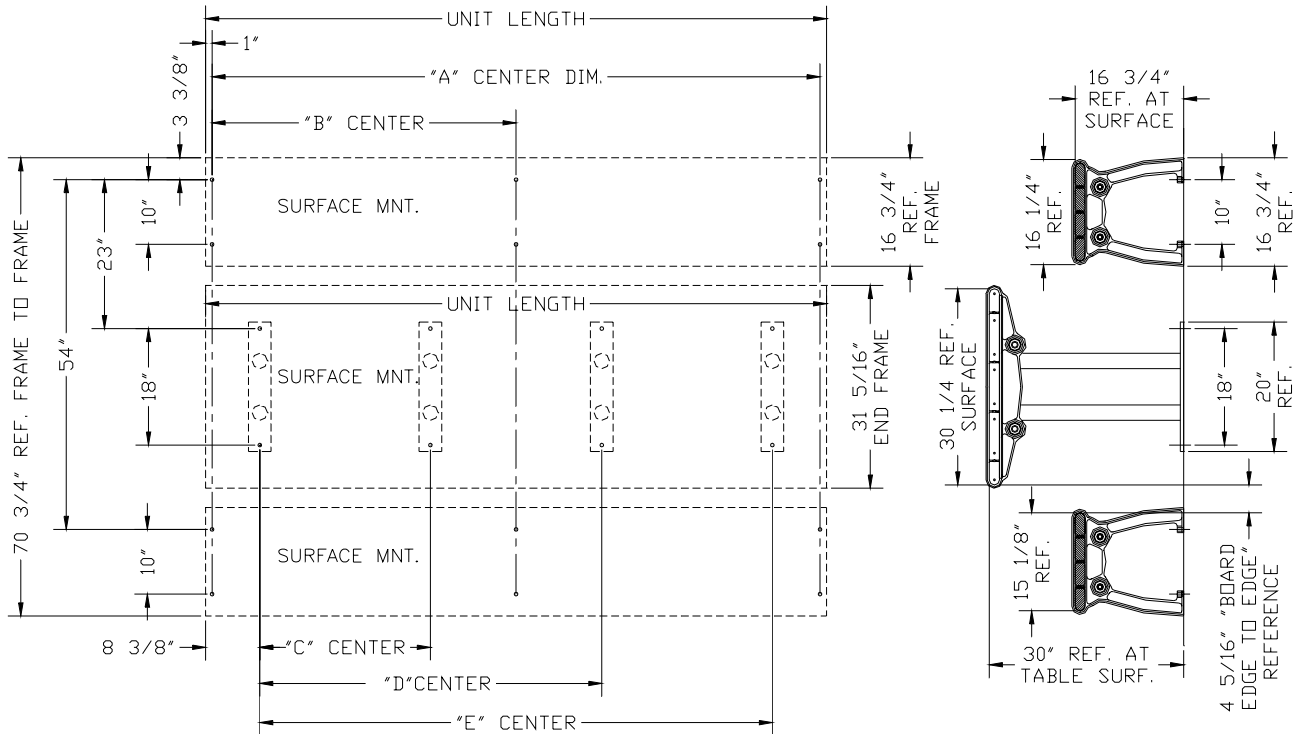
22. When table and seat have been assembled, mount according to instructions and diagrams. Do not attempt to surface mount weldments or supports until the units are fully assembled.
23. Surface mounted units will need a level, smooth surface for mounting.
24. Surface mounted units will need concrete anchors at all the mounting hole placements.
25. All units will mount using the same end (width) center line dimensions as shown referenced from the end section of the units in the diagrams below.

26. The 5, 6, and 8 foot length units will use their side (length) center line dimensions as shown on individual mounting instructions for each specific unit. These dimensions are not the same for an equal length table or seat. In order for all units to align on ends, use a chalk line on surface for a reference from outside edge of a seat end support. See table below for dimensions

Unit Length (ins)	Number Supports	Beginning Distance	A center dimension	B center dimension	C center dimension	D center dimension	E center dimension
2 ft Seat 25 ins	Two (2)	1 inch	23 inches				
5 ft Seat 60 ins	Two (2)	1 inch	58 inches	-----	-----	-----	-----
6 ft Seat 72 ins	Two (2)	1 inch	70 inches	-----	-----	-----	-----
8 ft Seat 96 ins	Three (3)	1 inch	94 inches	47 inches	-----	-----	-----
5 ft Table 60 ins	Three (3)	8 3/8 in.	-----	-----	21 5/8 in.	43 1/4 in.	-----
6 ft Table 72 ins	Three (3)	8 3/8 in.	-----	-----	27 5/8 in.	55 1/4 in.	-----
6 ft ADA Table 72 ins	Three (3)	8 3/8	-----	-----	26 inches	59 1/2 in.	-----
8 ft Table 96 ins	Four (4)	8 3/8 in.	-----	-----	26 3/8 in.	52 7/8 in.	79 1/4 in.
8 ft ADA Table 96 ins	Four (4)	8 3/8 in.	-----	-----	25 inches	50 inches	83 1/2 in.

DIAGRAM 1

Standard Park Avenue table with two standard seats, surface mounted shown.



BILL OF MATERIAL – 500401		
PART #	DESCRIPTION	QTY
73-100025	PICNIC TABLE SUPPORT	1
73-100032	PICNIC TABLE END	2
73-100039	PICNIC TABLE SUPPORT, ADA	2
80-300501	SEAT 2 FOOT PARK AVENUE	1
80-300101	SEAT 6 FOOT PARK AVENUE	1
	2 X 4 X 70-3/4" BULL-NOSE PLASTIC LUMBER	2
	2 X 8 X 70-3/4" ROUND CORNER PLASTIC LUMBER	3
71-0008	FASTENER KIT INCLUDES:	1
71-TP14112SS	SCREW, BUTTON HEAD STAINLESS 14X1-1/2 SECURITY	138
71-532HEXKEY	HEX KEY, 5/32" HEX SECURITY	1
71-532BIT	BIT, DRILL 5/32" DIAMETER	1
71-532HEXBIT	HEX BIT, 5/32" HEX SECURITY	1