

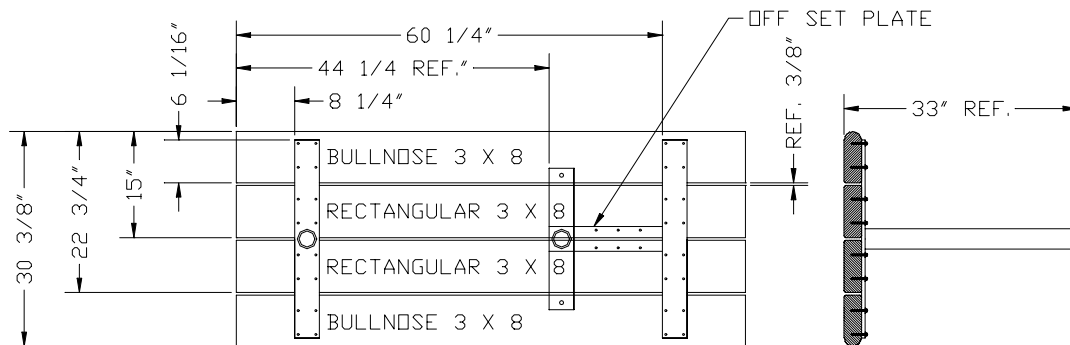
ASSEMBLY AND MOUNTING INSTRUCTIONS – FORESITE DESIGNS  
 6 FOOT ADA TABLE, PARK SCAPE DESIGN 170101 AND 170102

PAGE 1

ASSEMBLY INSTRUCTIONS: ACCESSIBLE TABLE 6 FOOT LENGTH 170101, 170102

1. Unpack and lay out pieces to assemble. Verify that the parts, quantity, and dimensions match those on the enclosed bill of material.
2. Begin by placing two bull nose boards down on the ground or work area with curved side facing away from each other. Place the two rectangular boards between the two bull nose boards. Begin with one bull nose board and use other boards as working shims.
3. Place one weldment with plate having 16 drilled holes down against the boards and locate plate at a distance of 8 1/4 inches from plate side edge to end of bull nose and at a distance of 6 1/16 inches from plate end edge to flat side of bull nose. Use a hand square to line up plate on the bull nose surface. See diagram 1.
4. Drill 5/32 diameter pilot hole (four places) into the board and install four 1/4 x 2 screws into the board. (use end 4 holes in metal plate of weldment as a drill guide)
5. Place the other weldment with plate having 16 drilled holes down against the board and locate at a distance of 60 1/4 inches from plate side edge to same end of bull nose used in step 4 and at a distance of 6 1/16 inches from plate end edge to flat side of bull nose. Use a hand square to line up plate on the bull nose surface. See diagram 1. Ref 44 1/4 inches to the plate with post
6. Drill 5/32 diameter pilot hole (four places) into the board and install four 1/4 x 2 screws into the board. (use end 4 holes in metal plate of weldment as a drill guide)
7. Locate one rectangular board at a distance of 8 1/4 inches from plate side edge to end of board and at a distance of 15 inches from extreme curved side of secured bull nose at both ends of rect. board. (Ref. 3/8 inch gap between sides of boards at each end.) See diagram 1.
8. Drill 5/32 diameter pilot hole (eight places) into the board and install eight 1/4 x 2 screws into the board. (use second line of 4 holes in metal plate of weldment as a drill guide)
9. Locate second rectangular board at a distance of 8 1/4 inches from plate side edge to end of board and at a distance of 22 3/4 inches from extreme curved side of secured bull nose at both ends of rectangular board. (Ref. 3/8 inch gap between sides of rectangular boards at each end.)
10. Drill 5/32 diameter pilot hole (eight places) into the board and install eight 1/4 x 2 screws into the board. (use third line of 4 holes in metal plate of weldment as a drill guide)
11. Locate second bull nose board at a distance of 8 1/4 inches from plate side edge to end of board and at a distance of 30 3/8 inches from extreme curved sides of two bull nose boards at both ends. (Ref. 3/8 inch gap between sides of rectangular boards at each end.)
12. Drill 5/32 diameter pilot hole (eight places) into the board and install eight 1/4 x 2 screws into the board. (use fourth line of 4 holes in metal plate of weldment as a drill guide)
13. Drill 5/32 diameter pilot hole (six places) into the two rectangular boards using the offset plate as a drill guide and install six 1/4 x 2 screws into the boards.
14. Check square ness of table before tightening screws.

DIAGRAM 1: TABLE 6 FOOT LENGTH SURFACE 170101 SHOWN



ASSEMBLY AND MOUNTING INSTRUCTIONS – FORESITE DESIGNS  
6 FOOT ADA TABLE, PARK SCAPE DESIGN 170101 AND 170102  
PAGE 2

MOUNTING INSTRUCTIONS: TABLE 6 FOOT LENGTH 170101, 170102

1. Surface mount table 170101 mounts with  $\frac{1}{2}$  inch anchors into concrete surface at dimensions as shown on diagram 2.
2. Embedded mount table 170102 mounts by setting in filled holes at dimensions as shown on diagram 2.

DIAGRAM 2: ADA TABLE 6 FOOT LENGTH, SHOWN ARE  
SURFACE 170101 CONCRETE ANCHORS 4 PLACES  
EMBEDDED 170102 FILLED HOLES 2 PLACES

