

MOUNTING INSTRUCTIONS – FORESITE DESIGNS
 PARK SCAPE DESIGN PICNIC TABLE WITH SEATS
 ALL STYLES USE SAME CENTER DIMENSIONS

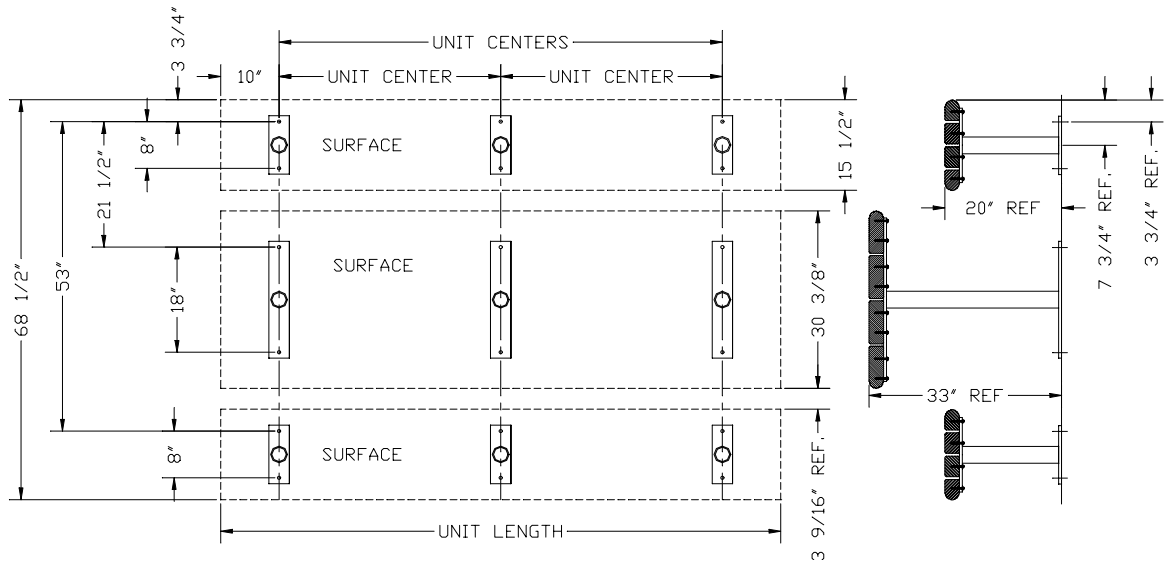
PAGE 1

ASSEMBLY INSTRUCTIONS: PARK SCAPES TABLES WITH SEATS (ALL UNITS)

1. When table and seat have been assembled, mount according to instructions and diagrams. Do not attempt to mount weldments or embed support tubes until the units are fully assembled.
2. Embedded units, mounted in concrete piers need a minimum 8 inch diameter Sono Tube form to a depth conforming with local codes or requirements for each support tube. A 10 inch diameter Sono Tube form would be considered as a maximum diameter requirement.
3. Embedded units should be set so reference dimensions above grade are maintained. This should produce a nominal 12 inch length of the support tubes in the concrete piers.
4. Concrete should be a type conforming to local codes or requirements.
5. Embedded units will need to be supported so reference dimensions for heights above grade are maintained. Tubes will need to remain centered in the form as concrete is added.
6. Surface mounted units will need a level, smooth surface for mounting.
7. Surface mounted units will need concrete anchors at all the mounting hole placements.
8. All units will mount using the same end (width) center line dimensions as shown referenced from the end section of the units in the diagrams below.
9. The 5, 6, and 8 foot length units will use their side (length) center line dimensions as shown on individual mounting instructions for each specific unit. These dimensions are the same for an equal length table or seat.
 - a. 5 FOOT table or seat: 2 supports, 40 inches on center, begin 10 inches from one end.
 - b. 6 FOOT table or seat: 2 supports, 52 inches on center, begin 10 inches from one end
 - c. 8 FOOT table or seat: 3 supports, 38 inches on center, begin 10 inches from one end
 - d. 6 FOOT ADA table: 2 supports, 36 inches on center, begin 10 inches from none ada end.
 - e. 8 FOOT ADA table: 3 supports, 38 and 22 inches on center, begin 10 inches from none ada end of table.
10. For ADA tables, one or both seat units need to be shorter than the table length.

DIAGRAM 1

8 foot standard Park Scapes table with two 8 foot standard seats, surface mounted shown.



MOUNTING INSTRUCTIONS – FORESITE DESIGNS
 PARK SCAPE DESIGN PICNIC TABLE WITH SEATS
 ALL STYLES USE SAME CENTER DIMENSIONS
 PAGE 2

DIAGRAM 2

8 foot standard Park Scapes table with two 8 foot standard seats, embedded mounting shown.

